

# **Handy terminal application system Specifications Documentation EN Blueprint for Asteer Blueprint**

R1

Made for : Asteer (Thailand) Co., Ltd.

By : TOMAS TECH CO.,LTD.



## **TOMAS TECH**

**TOMAS TECH CO.,LTD.**

7/1 (3C) Udomsuk 46 Alley, Khwaeng Bang Na, Khet Bang Na, Bangkok 10260 Thailand

Tel : +66-98-271-9741 E-mail : [info@tomastc.com](mailto:info@tomastc.com)

Revision History

Date	Version	File name	Details
28/Sep/2023	R1	Handy terminal application system Specifications Documentation EN Blueprint for Asteer	First edition

## ■ Contents

1. Overview
2. Overall configuration diagram
3. Schedule information
4. System functional specifications
5. Q&A
6. Sign off

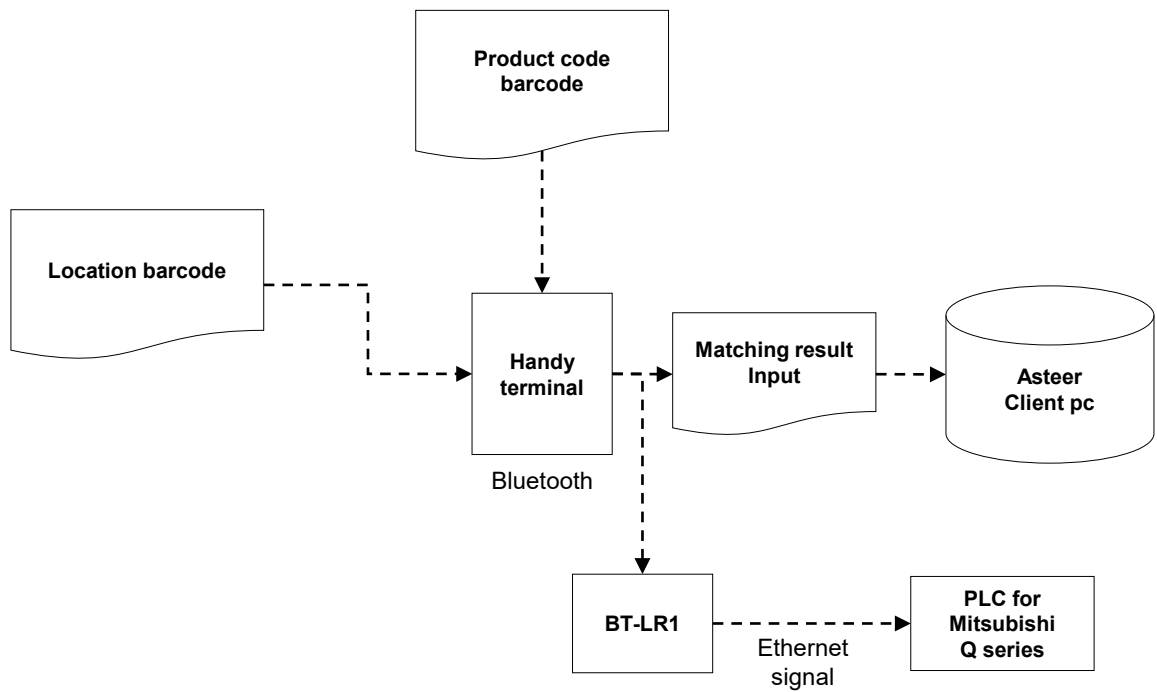
## 1. Overview

Scan the product barcode on the pallet and the location barcode for verification.

## 2. Overall configuration diagram

Describe the image concept of software and hardware used in Asteer.

Overall configuration diagram image



### 3. Schedule information

Scan the model number and serial number attached to the product. Since the box also has a serial number, it is scanned and verified.

#### Scan data of parts label (Input data)

Topre		INTERNAL TAG		QTY/SNP	CHECK POINT/จุดเช็คความแตกต่าง
PART NO.	79102-A080P			80	 SP Pallet: BACK (D-CAB)
หมายเลขสินค้า				80	
PART NAME	BACK PANEL				
ชื่อสินค้า					
MODEL/รุ่น	5F00	CUSTOMER	Mitsubishi	Production	
ชื่อรุ่น		ลูกค้า			
PRODUCTION LINE	TRF2500-A	LOT NO	1/1		
สายการผลิต		หมายเลขล็อต			
TEXT PROCESS	Customer	PRODUCE DATE	7-Jun		
กระบวนการถัดไป		วันผลิต			
ADDRESS	16	RESULT DATE	7 JUN 2023		
พื้นที่จัดวาง		วันผลิตรอง			
QMS S-PC-03 Rev 01					

#### Scan data of location code (Input data)



#### Parts no and Location mapping csv (Input data)

#	Parts no	Location code						
1	M79102A080P	1001						
2	M79102A010P	1002						
3	M79102A020P	1003						
4	M79102A030P	1004						
5	M79102A040P	1005						
6	M79102A050P	1006						

#### Product list result (Output data)

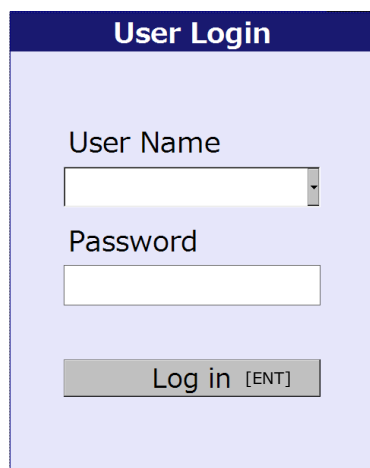
#	Work date	Work time	Product no	Location No	User ID	OK/NG			
1	20-Jun-21	8:00	HT 20012	4585252	57041	OK			
2	20-Jun-21	8:10	HT 20012	4585253	57041	OK			
3	20-Jun-21	8:20	HT 20012	4585254	57041	NG			
4	20-Jun-21	8:30	HT 20012	4585255	57041	OK			
5	20-Jun-21	8:40	HT 20012	4585256	57041	OK			
6	20-Jun-21	8:50	HT 20012	4585257	57041	OK			

## 4. System functional specifications

### 4-1. Handy terminal function

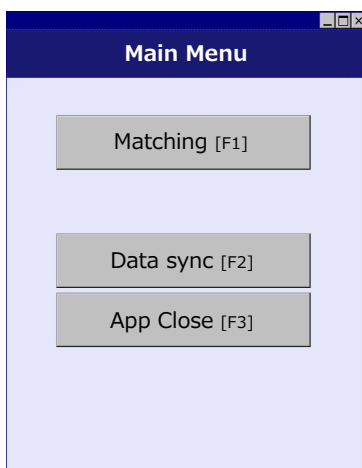
Handy terminal function / screen image

1.User Login



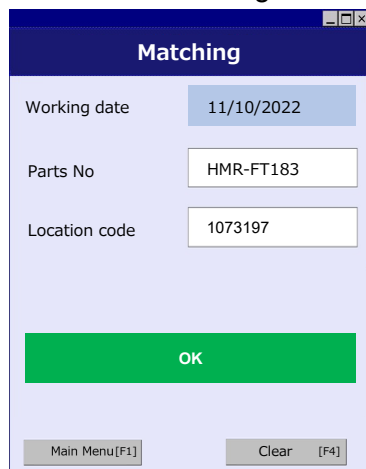
The User Login screen features a dark blue header with the title "User Login". Below the header, there are two input fields: "User Name" and "Password". The "User Name" field has a dropdown arrow on its right side. Below the "Password" field is a "Log in [ENT]" button. The background is light blue.

2.Main Menu



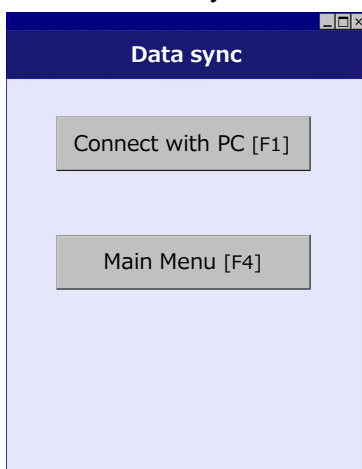
The Main Menu screen has a dark blue header with the title "Main Menu". Below the header, there are three buttons stacked vertically: "Matching [F1]", "Data sync [F2]", and "App Close [F3]". The background is light blue.

3. Matching



The Matching screen has a dark blue header with the title "Matching". Below the header, there are three input fields: "Working date" (displaying "11/10/2022"), "Parts No" (displaying "HMR-FT183"), and "Location code" (displaying "1073197"). Below these fields is a large green "OK" button. At the bottom, there are two buttons: "Main Menu[F1]" and "Clear [F4]". The background is light blue.

4.Data sync

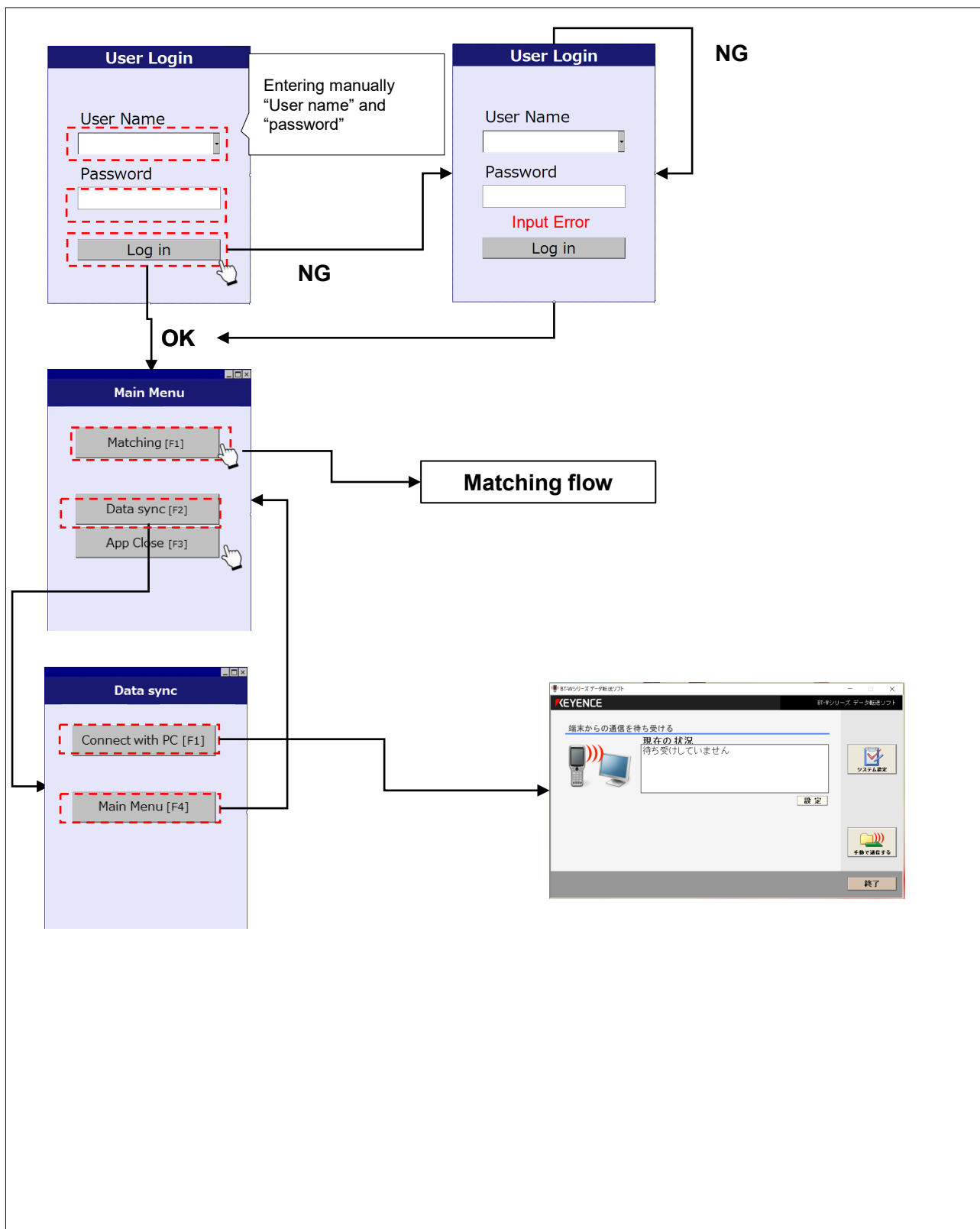


The Data sync screen has a dark blue header with the title "Data sync". Below the header, there are two buttons stacked vertically: "Connect with PC [F1]" and "Main Menu [F4]". The background is light blue.

## 4. System functional specifications

### 4-1. Handy terminal function

#### Handy terminal function / screen flow

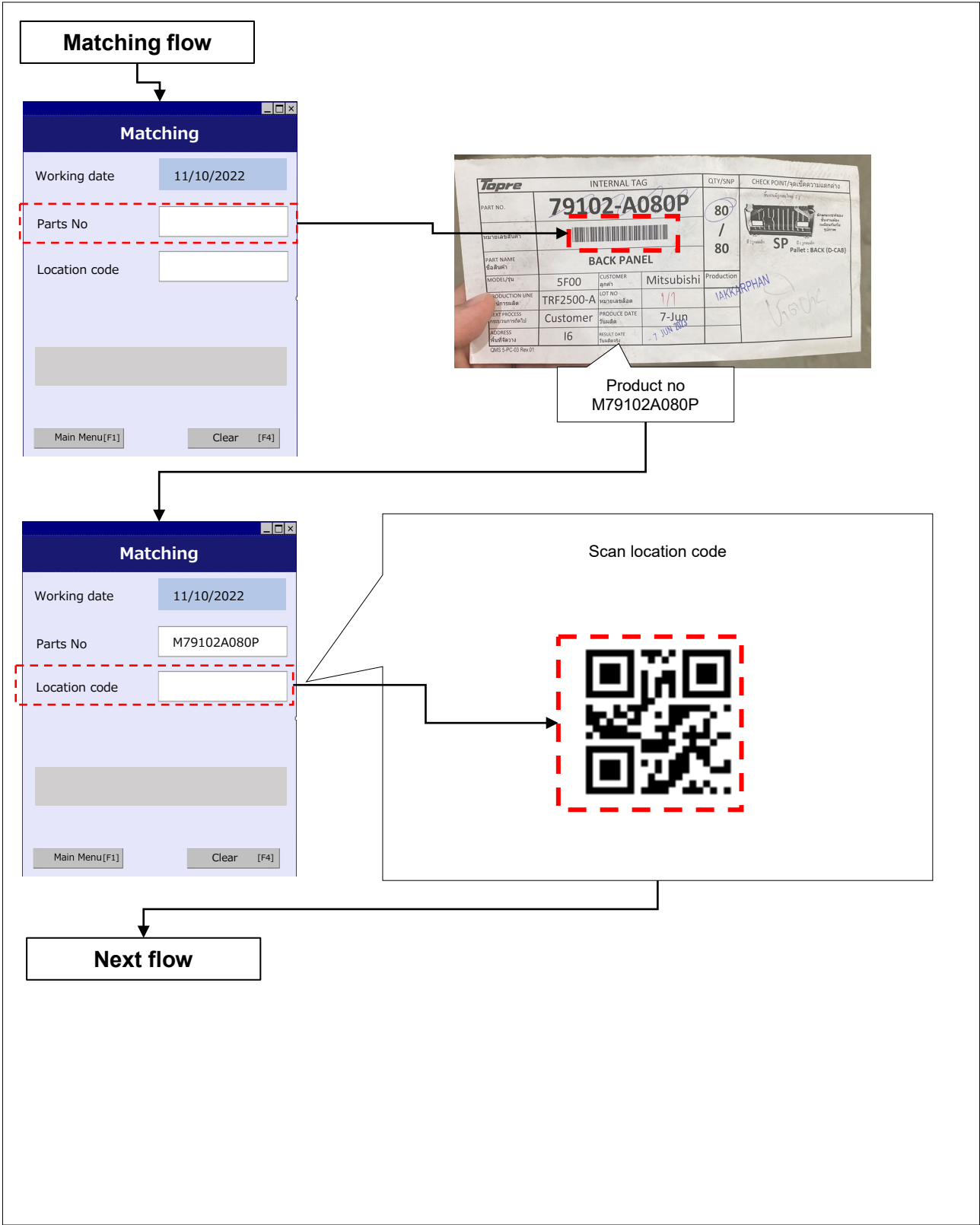




# 4. System functional specifications

## 4-1. Handy terminal function

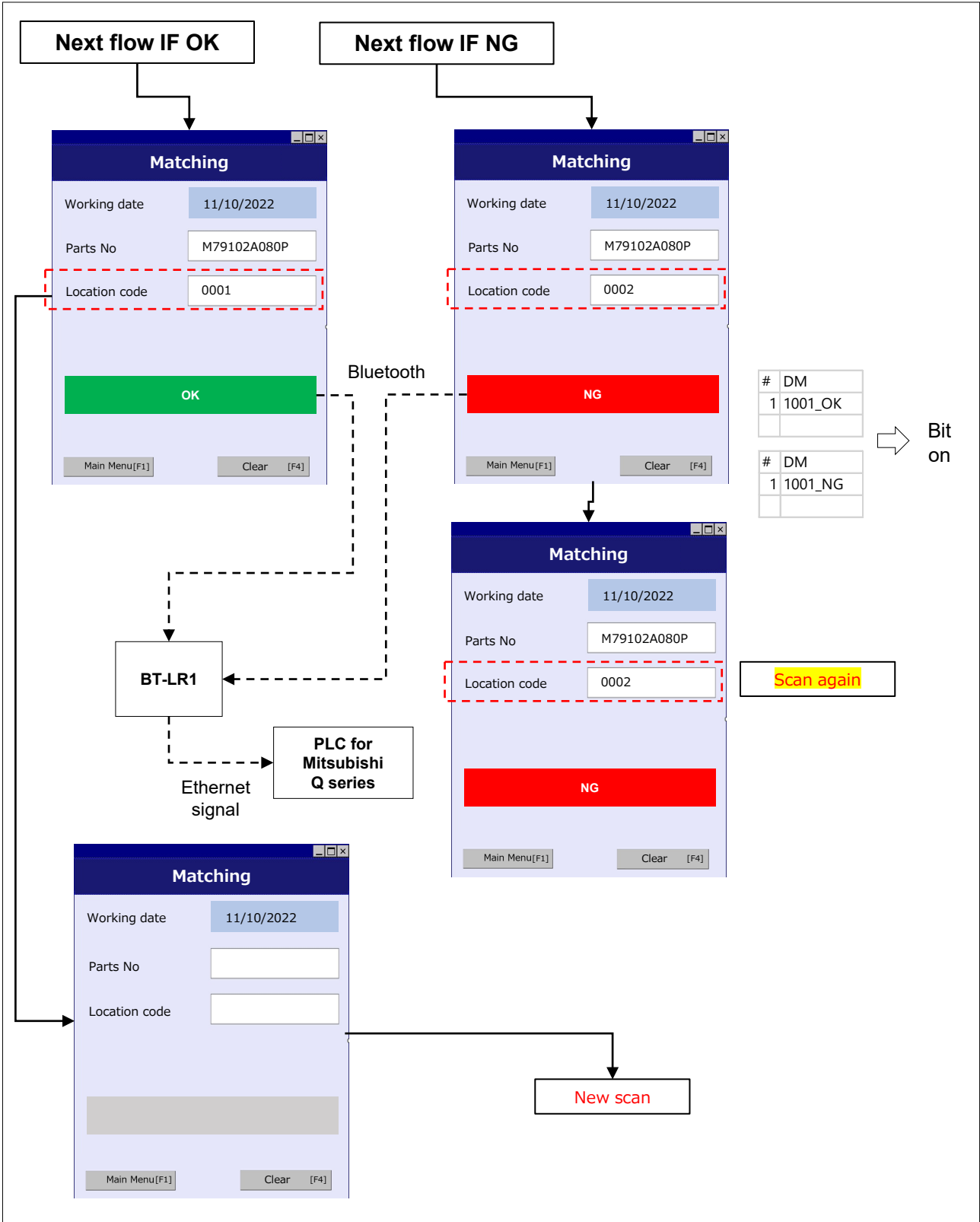
Handy terminal function / screen flow



#### 4. System functional specifications

#### 4-1. Handy terminal function

## Handy terminal function / screen flow



## 4. System functional

### 4-2. Import / Export application

#### 4-2-1. Advance preparation

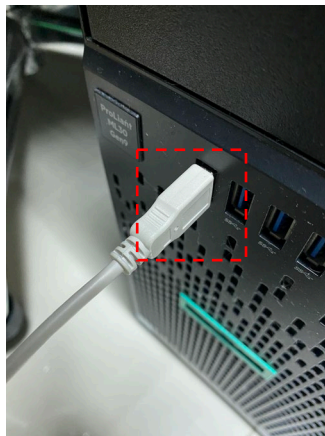
Import / Export tool function / screen flow

1. Set the handy terminal in the cradle.



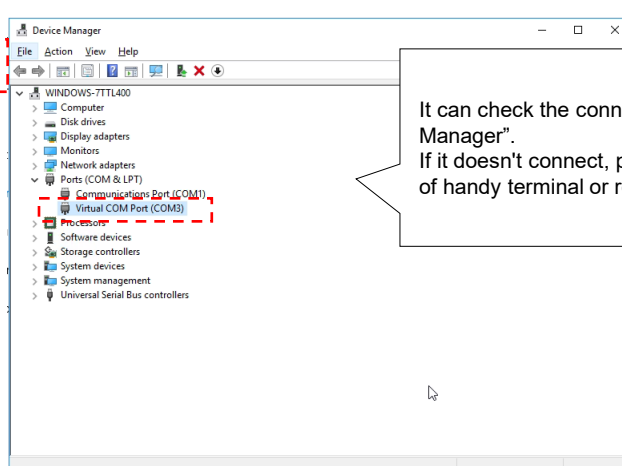
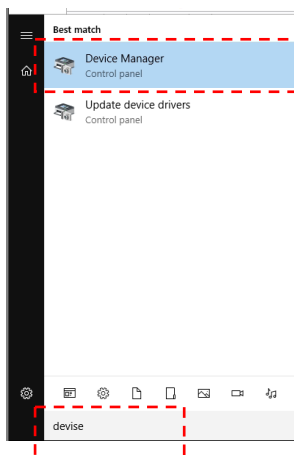
Set the handy terminal in the cradle.  
If the lamp of the handy terminal is Red or Green, the connection is established.

2. Plug the USB cable into the cradle and PC.



Plug the USB cable into the cradle and PC.

3. Plug the USB cable into the PC.



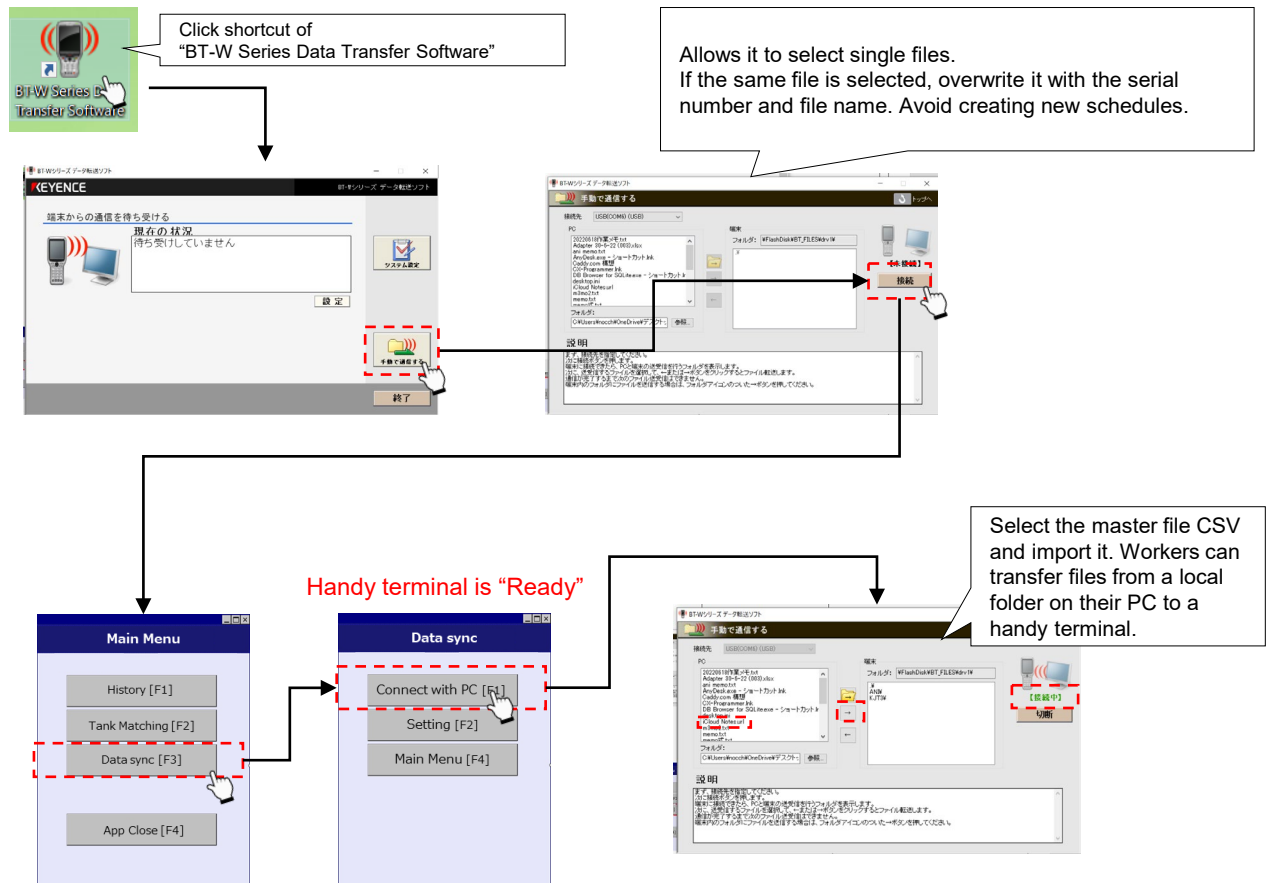
It can check the connection with "Device Manager".  
If it doesn't connect, plug it back into the cradle of handy terminal or restart PC.

## 4. System functional

### 4-2. Import / Export application

#### 4-2-2. Import procedure

##### Import / Export tool function / screen flow

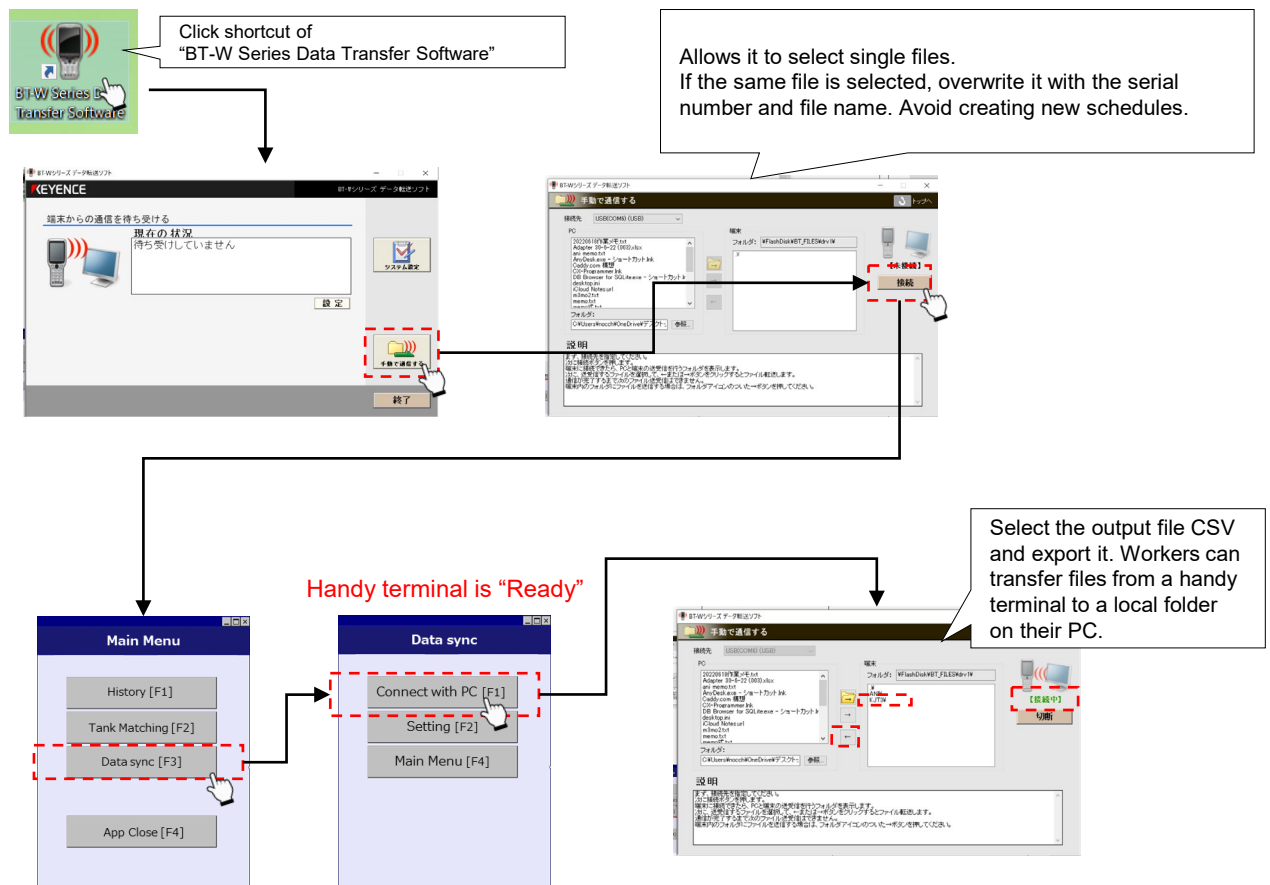


## 4. System functional

### 4-2. Import / Export application

#### 4-2-3. Export procedure

##### Import / Export tool function / screen flow



5. Q&A

#	Date	Question	By	Date	Answer	By

## 6. Sign off

We hereby acknowledge and agree the above-mentioned blueprint requirements.  
Any changes required after the sign off for this blueprint will be addressed through the change request process.

**Asteer (Thailand) Co., Ltd.**

**Sign:** \_\_\_\_\_

**Name:** \_\_\_\_\_

**Title:** \_\_\_\_\_

**Date:** \_\_\_\_\_

**TOMAS TECH CO.,LTD.**

**Sign:** \_\_\_\_\_

**Name:** \_\_\_\_\_

**Title:** \_\_\_\_\_

**Date:** \_\_\_\_\_

**## END OF BLUEPRINT##**